



RIVERMARO

SAN CARLOS

Playa El Palmar



*Fun and beach for the family*



*2 km away from the beach*



*Quick access to the river*

**YOU NEED  
A BIT MORE OF**

*Jungle in  
your Life*



MMP  
REALTORS



FABRIKA URBANA



RIVERMARO is a Country Houses project with 55 lots ranging from 600 m<sup>2</sup> to 1,200 m<sup>2</sup> located 4 minutes away from El Palmar Beach and only 1.5 hours from Panama City, situated in a premium area of San Carlos.

- Just 2 km away from El Palmar Beach
- Close to restaurants and other points of interest
- Only 3 minutes from the Inter-American Highway
- Well-maintained access roads
- Opportunity to choose the design of your future home

**PRE-SALE** price starting from:

**\$135,700**

# AMENITIES

- Perimeter fencing with gated access
- Lots with views of the River, Mountains, and towards El Palmar
- Social area with swimming pool



The maintenance fee will start at \$90.00 per month and will increase according to needs.

# Kauai Model



The images shown in this presentation are for illustrative purposes only; all graphical and textual information is subject to change without prior notice. Dimensions and furniture are approximate representations and do not constitute a contract or guarantee. All rights reserved.





## Kauai Model:

66.30 m2 closed area

17.90 m2 open area

84.20 m2 total excluding parking

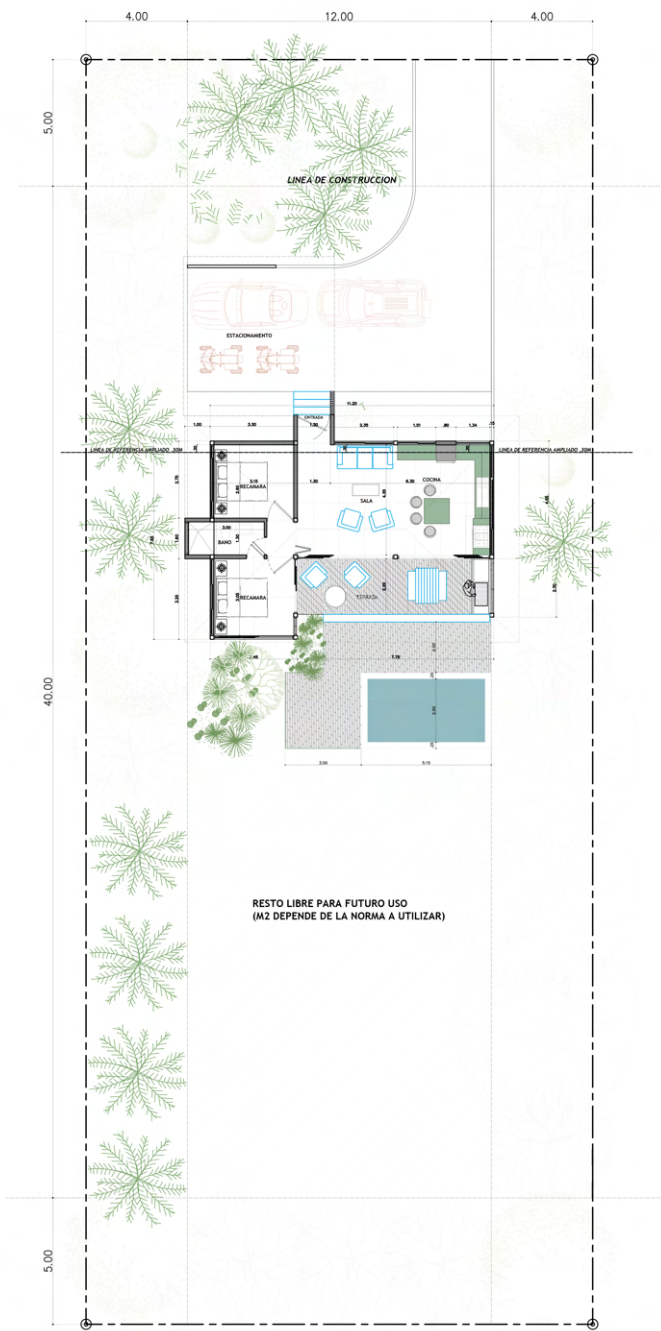
- ✓ 2 bedrooms
- ✓ 1 full bathroom
- ✓ Terrace
- ✓ Parking area
- ✓ Kitchen
- ✓ Individual water tank
- ✓ Living room
- ✓ Concrete polished floor
- ✓ Basic gardening included

## Optional:

- ✓ Pool \$11,700
- ✓ Deck with Solid Teak \$15,700
- ✓ Covered Parking \$15,500

Price starting from **\$135,700** on a **600 m2** lot.

Price starting from **\$159,000** on a **1000 m2** lot.



AREA DE CONSTRUCCION
CASA (AREA CERRADA): 66.30M <sup>2</sup>
TERRAZA (ABIERTA): 17.90M <sup>2</sup>
TOTAL: 84.20M <sup>2</sup>

- ESTACIONAMIENTO:  
37.00M<sup>2</sup> TEJADO
- 56.00M<sup>2</sup> RODADURA ABIERTA / CAPA BASE
- DECK PISCINA:  
24.00M<sup>2</sup> DECK
- PISCINA:  
15.40M<sup>2</sup> DECK

# Modelo O´AHU



The images shown in this presentation are for illustrative purposes only; all graphical and textual information is subject to change without prior notice. Dimensions and furniture are approximate representations and do not constitute a contract or guarantee. All rights reserved.



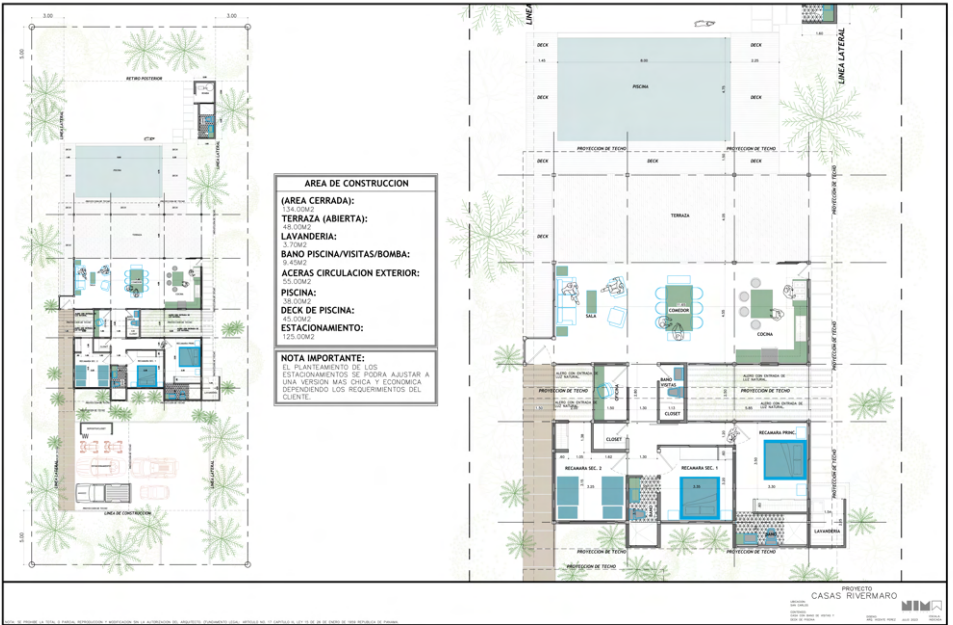
# Modelo O´AHU



The images shown in this presentation are for illustrative purposes only; all graphical and textual information is subject to change without prior notice. Dimensions and furniture are approximate representations and do not constitute a contract or guarantee. All rights reserved.







## O'AHU Model

- ✓ Subtotal: 365 m<sup>2</sup>
- ✓ 235 m<sup>2</sup> closed area
- ✓ 3 bedrooms with closets
- ✓ 2 1/2 bathrooms
- ✓ Home office
- ✓ Laundry area/closet
- ✓ Exterior storage
- ✓ Individual water tank
- ✓ Polished concrete floors
- ✓ Parking area
- ✓ Basic gardening included

## Optional

- ✓ Roofed Parking \$25,000
- ✓ Pool \$51,500
- ✓ Deck \$25,500

From:

**\$241,000** on a **600 m<sup>2</sup>** lot

**\$273,000** on a **1,000 m<sup>2</sup>** lot

Prices subject to verification before starting construction.

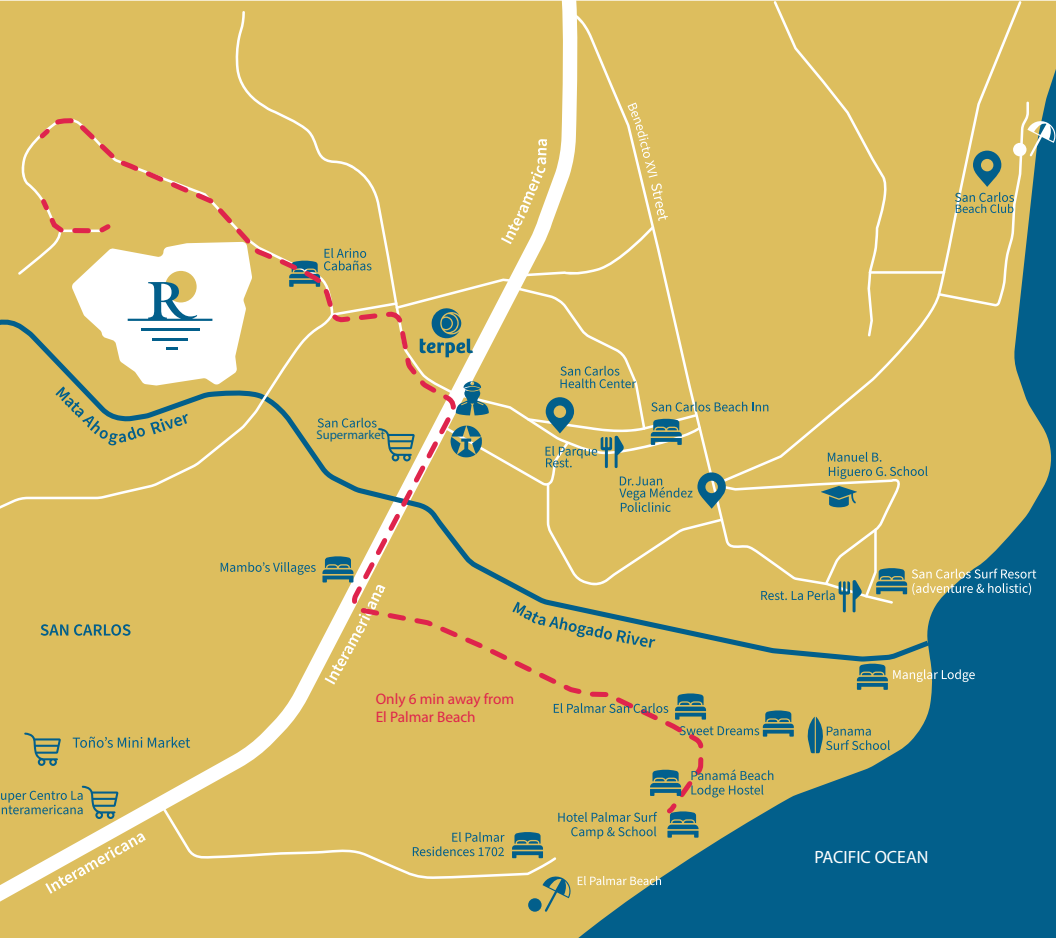




# WITH ONLY 55 NEIGHBORS IT'S POSSIBLE TO CREATE COMMUNITY!

- \* With just 55 neighbors, it's possible to build a community.
- \* From 600 to 1,200 m<sup>2</sup>
- \* Project with condominium regulations





*Less than*  
minutes to Rivermaro

10

*More than*  
surf and beach spots



**Sales & Information**  
**Carlos H. Martínez M.**  
**+507 6671-0686**  
**carlos@mmp.com.pa**  
**www.mmpr.com.pa**



**MMP**  
REALTORS